

Set up and Test Your PXI™ Switch Card

1 Install Your Software



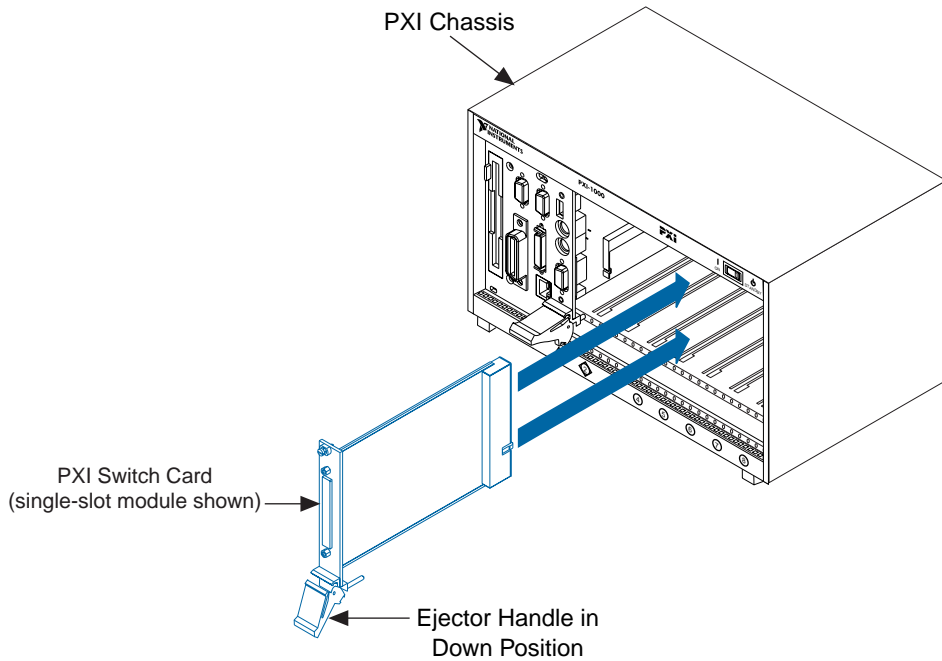
2

Install Your National Instruments PXI Switch Card



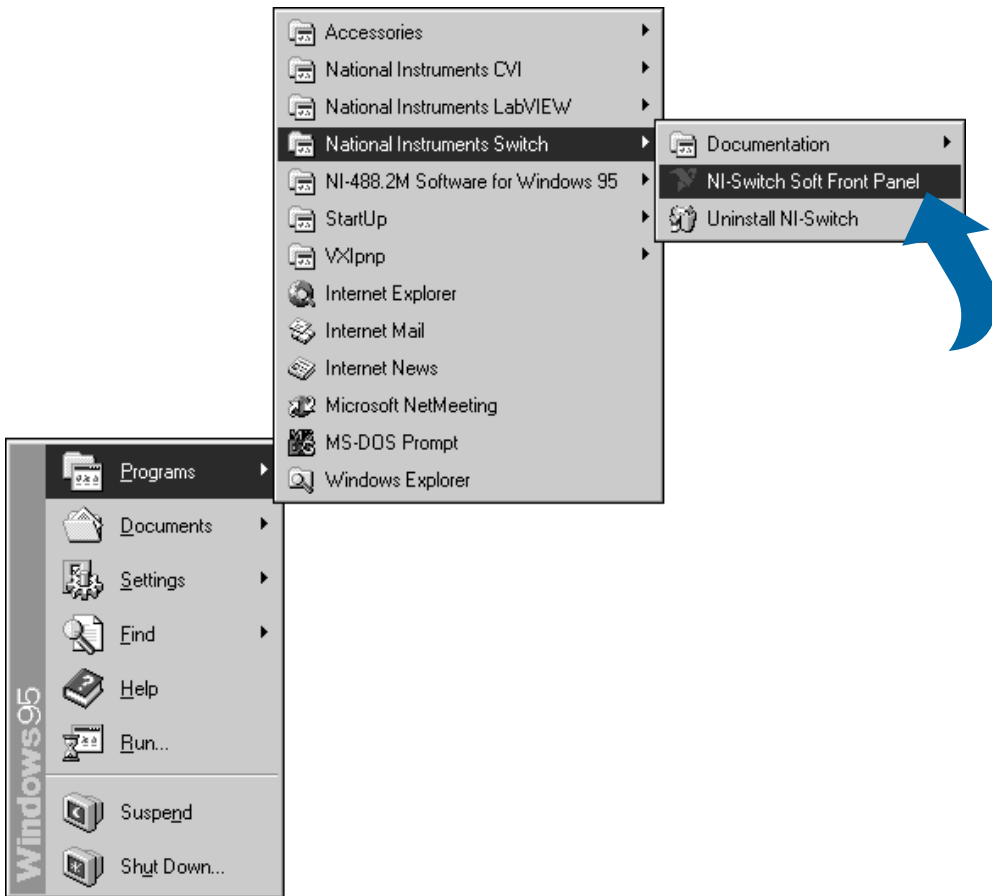
Caution

Turn the power off before installing your hardware.



3

Run the Soft Front Panel

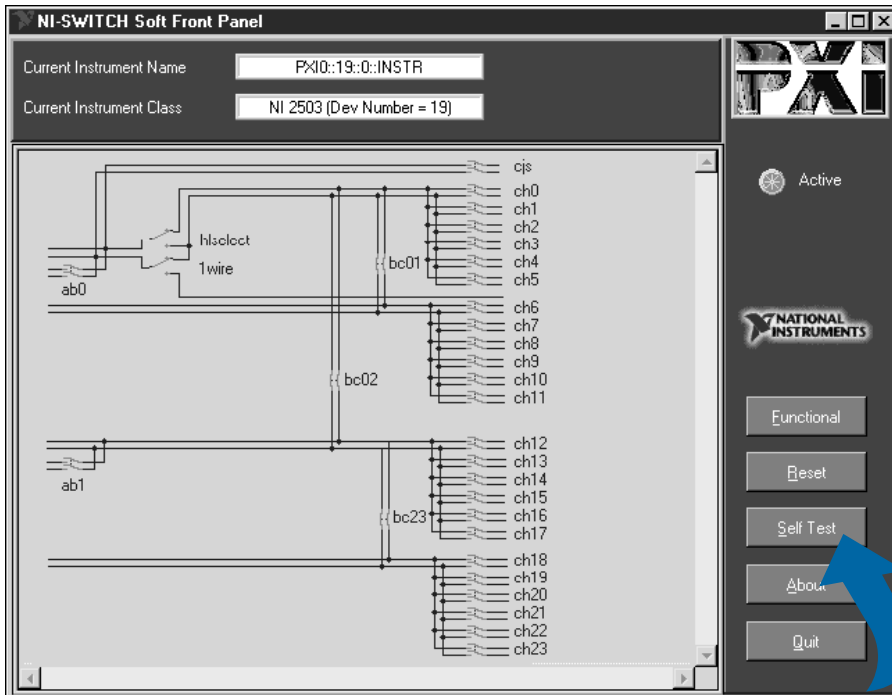


4 Run the Self-Test



Note

The soft front panel is specific to your switch card. This example shows the soft front panel for the National Instruments NI 2503 switch card.



Single Click

